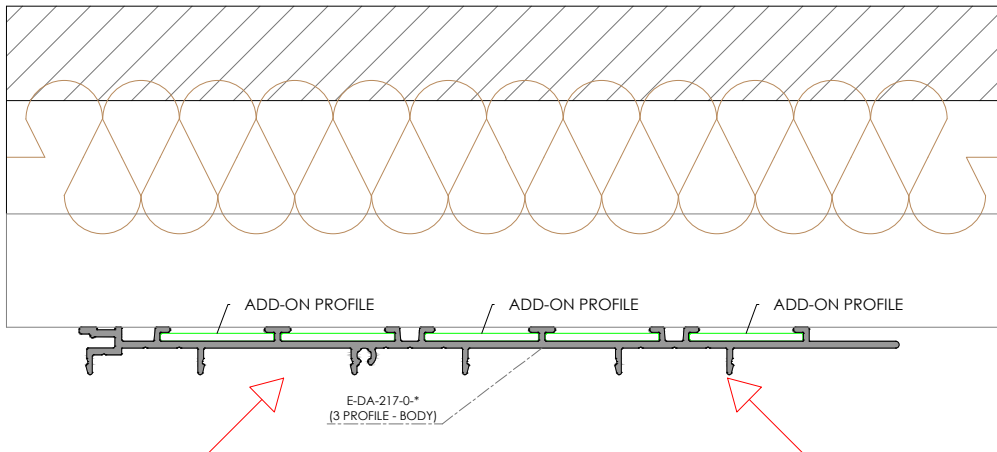
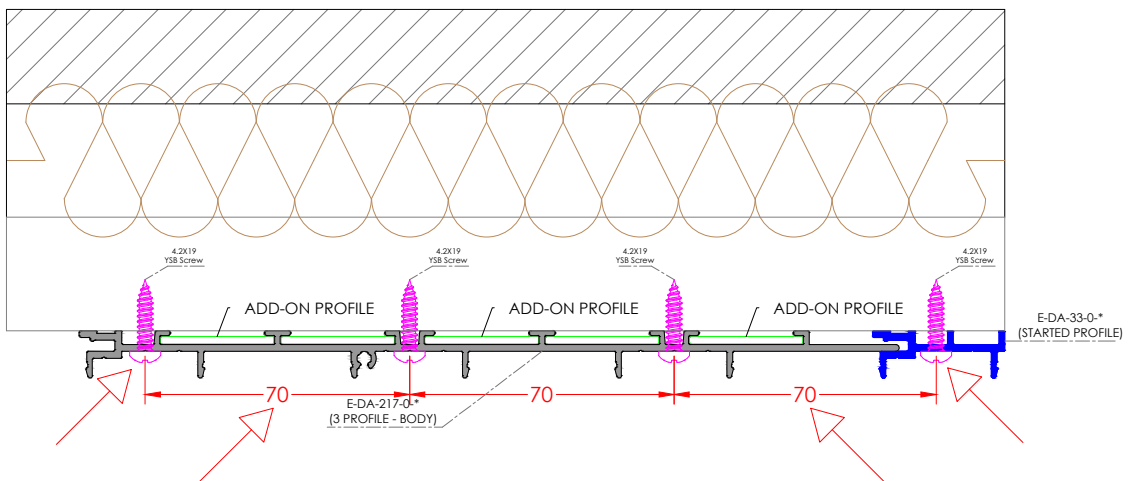


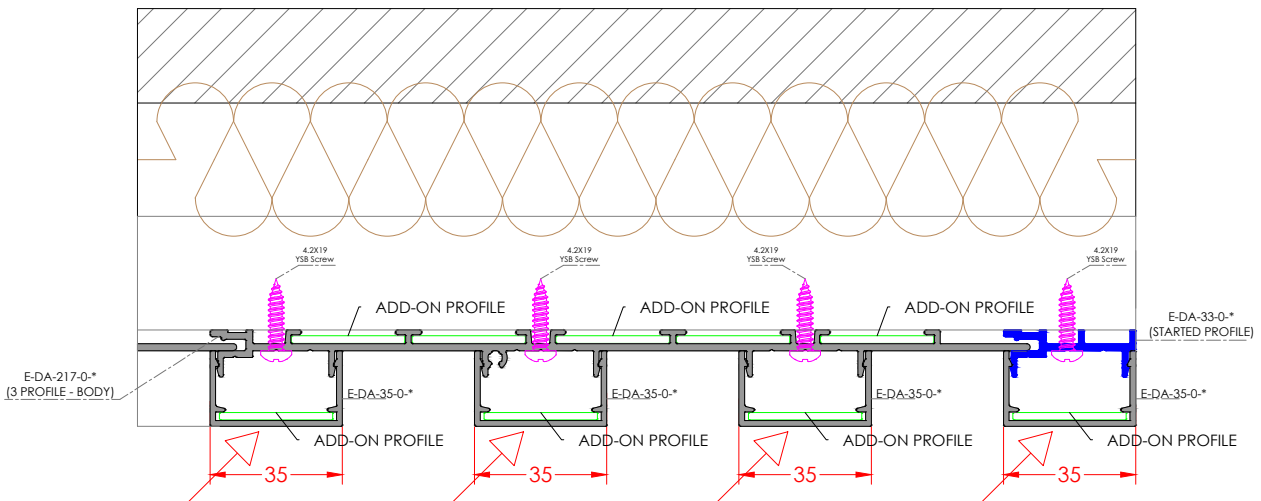
Step 1: Before starting the installation, make sure that the wall surface is level and properly prepared. If the wall surface is suitable, you need to position the 2-profile or 3-profile body sections on the wall according to your project. Please refer to the drawing below.



Step 2: The profile sections positioned on the wall surface are fixed to the wall using 4.2 x 19 mm screws through the screw holes on the profiles, as shown in the drawing below. The screw spacing is approximately 70 mm. A guide line is indicated on the body profile, and it is recommended to apply screws at 1000 mm intervals along the height. Depending on the height, the number of screws can be increased. For corner applications, start and end profiles can be used, while joint profiles can be used for extending the body sections.



Step 3: The selected Decoal Series profiles are installed onto the body profiles fixed to the wall by means of clips, and the installation is completed.



Note: The ADD-ON profiles shown in the drawing are expansion profiles used in long applications or joint sections.