

# WINDOW AWNING



## Window Awning

Window awning is a beautiful-looking, multi-functional product that protects your spaces from the effects of sun and rain, and provides an attractive, decorative and conceptual appearance to store and home windows. all kinds of doors such as balcony or entrance. The cassette of the system protects both the mechanism and the fabric. The system, which comes in various colors, is automatic and user-friendly. The tilt angle range is between 0-160°. which allows you to let in as much sunlight as you want..



### Connectors:

Connectors and fittings of aluminum injection die-cast are used in the installation of window awnings. Ceiling or wall mounting options are available.



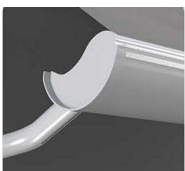
### Body Profile

The body profile of the window awning is strengthened TS 6063 extruded aluminum. it weighs 3900 gr per meter. When fully rolled back, it entirely protects the roll from external impacts.



### Arm Profile

The joint arms of window awning are manufactured out of strengt hened T5 6063 aluminum extrusion profiles. The size is 75mm x 37mm, with 3mm thickness. Within the system are strong springs that allow the tensioning that is attached to a steel wire, forming the overall joint arm structure. Standard arm system, called 'platinum segment' is used



### Forehead profile

Forehead profile of window awning is T5 6063 resilient aluminum extrusion profile, whose size is 77mm x 65mm, which weighs 1400g per meter. Compared to rivals in the market, it's quite robust and main reason of this material being used is its easy operability and adaptability of both arms and fabric. Additionally, forehead profile is designed in such a way that it functions like a gutter to drain rain water through its grooves.



### Acrylic fabric

The acrylic fabric of Window awning comes in more than 100 colors and patterns that are pleasing to the eye. The fabric is under 5-year guarantee against solar discoloration. The brand uses in system is Acrilla

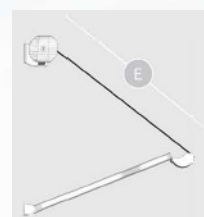


The motor used with window awning systems is Somfy. The reason for Somfy to be chosen is its reliable tensioning function which automatically stops when the fabric is fully rolled back. When in extension. the awning can be stopped at any point desired with a switch.



### Width and Expansion

(C) 100cm to 500cm  
(A) 0,5cm to 200cm



### Slobe

(E) 0° to 160°

### Warranty

System Warranty: 2 Years  
Fabric Warranty: 5 Years

# Colors



## Ral Color Chart

1000	1001	1002	1003	1004	1005	1006	1007	1011	1012	1013	1014	1015	1016	1017	1018	1019
1020	1021	1023	1024	1027	1028	1032	1033	1034	2000	2001	2002	2003	2004	2008	2009	2010
2011	2012	3000	3001	3002	3003	3004	3005	3007	3009	3011	3012	3013	3014	3015	3016	3017
3018	3020	3022	3027	3031	4001	4002	4003	4004	4005	4006	4007	4008	4009	4010	5000	5001
5002	5003	5004	5005	5007	5008	5009	5010	5011	5012	5013	5014	5015	5017	5018	5019	5020
5021	5022	5023	5024	6000	6001	6002	6003	6004	6005	6006	6007	6008	6009	6010	6011	6012
6013	6014	6015	6016	6017	6018	6019	6020	6021	6022	6024	6025	6026	6027	6028	6029	6032
6033	6034	7000	7001	7002	7003	7004	7005	7006	7008	7009	7010	7011	7012	7013	1015	7016
7021	1022	7023	7024	7026	7030	7031	7032	7033	7034	7035	7036	7037	7038	7039	7040	7042
7043	1044	1045	7046	7047	8000	8001	8002	8003	8004	8007	8008	8011	8012	8014	8015	8016
8017	8019	8022	8023	8024	8025	8028	9000	9001	9002	9003	9004	9005	9010	9016	9017	9018