



www.tgpsystems.com



Pergola & Motorized Rooftop Awning

Open / Close



Pergola & Motorized Rooftop Awning



Motorized rooftop awning is a sturdy, long-life all weather outdoor system that functions with a reliable tensioning mechanism. It is an ideal solution for cafes, restaurants as well as gardens, terraces and commercial or private patios.

The system protects users from UV exposure and harsh elements thanks to its 3-layer fabric system.

Rails and moving parts are silent functioning and low maintenance. Remote controlled, it is very practical as the rooftop of the same area can be used wide open or fully closed.

Various enclosure options can be applied below the system around the facility, thus ensuring a fully isolated space for all season outdoor comfort.





References



**High Quality Profiles
Somfy and Becker Motors**



High Quality Serge Ferrari, Sioen Fabric



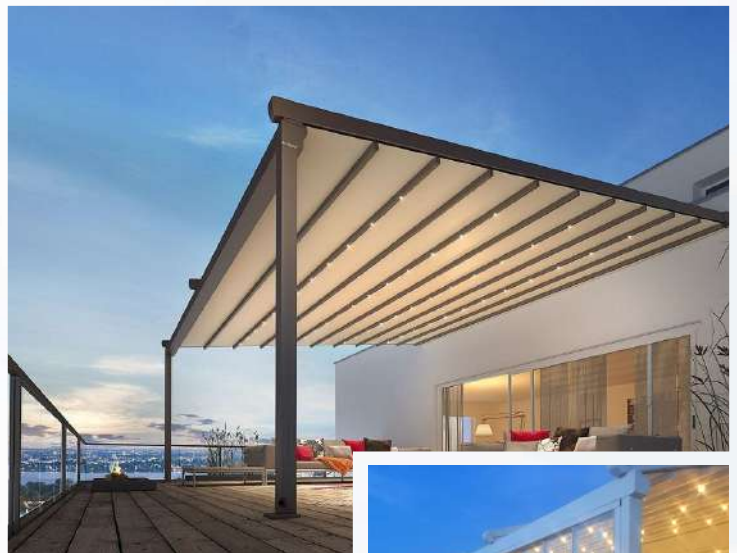
References



5 year Fabric Guarantee
5 year Motor Guarantee



2 year Alu. Construction Guarantee
2 Year Lighting Guarantee



Technical Details of Pergola and Motorized Rooftop Awnings



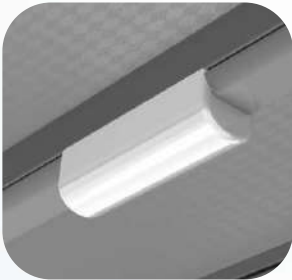
5 Year Warranty

Fabric used on motorized rooftop awnings is a 5- year-guaranteed, block-out fabric. Our preference on fabric is SERGE FERRARI and SIOEN that are 3- layered, flame retardant and sunproof. Its PVC-based flexy characteristics make it the most suitable material against outdoor weather conditions. Functionality and operability of our awnings have a 5-year mechanical warranty.



Motor

The motor powering our awning system is covered under a 5-year warranty by the motor manufacturer.



Lighting

24 Volt, Samsung A+ daytime LED lighting is installed on motorized rooftop awnings. IP65 led lighting runs on 0.150 mA. One 3w led per sqm. Leds are specially designed in tine with interiors of fabric profiles. Mounted on fabric profiles, leds are integrated with the overall system to last long and look stylish. Custom-manufactured polycarbonate led socket; 700 lumen-3000 kelvin. User-friendly, easy-to-replace led design.



Protective Sheet

Made of powder-coated galvanized sheet, the protective sheet, mounted on top of the railed rooftop awning prevents the motor, joint pins and connector and rolled- back fabric from weather elements and external factors.



Rain Gutter Side Cap

Used on the side facing gutter parts, the cap achieves a sleek look and prevents water spray. Mounted on the gutter with screwless connecting pins, the cap helps complete a solid look.



Motor Cap

Applied as the motor cap and on the parts of the motor tube facing sideways, it nicely blocks the sight of metal components and completes the aesthetic look of the entire system.



Rail Front Cap

This part, made up of powder-coated aluminum, the same color as guides and posts, is used to cover the front end of the guides through which carriers move.



Water Discharge

The pooling water on the fabric is directed towards the gutter and with the help of the tilting position of the roof drained through posts whose bottom parts are connected to the floor with stylish looking aluminum cast material that provides both a sturdy floor grip and water drainage.



Rain Gutter Connection Apparatus

Two gutters are attached to each other with an injection molded, high alloy, specially designed apparatus. Remarkable advantages of the apparatus is prevention of isolation flaws at connecting ends and ensuring an aesthetic finish. It also helps the overall system to look solid.

Carrier Car

Carriers are the components that provide mobility of the fabric through railed guides.

-They are made of polyamide, a durable, longer lasting material more resistant to weather elements.

-Connectors and fixtures on the carrier is 304 stainless steel.

-Carriers maintain mobility within the guide profiles smoothly and quietly even when there's pressure due to heavy fabric or curved shape of profiles.

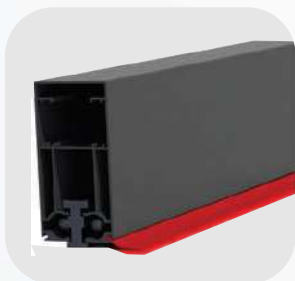
-Carriers have four wheels, preventing obstruction of mobility.





Insulation Seals

Insulation seals provide insulation between the moving parts of the awning and the construction. They prevent water seepage indoors, providing outstanding insulation by directing the water to the gutter.



Gutter



Rail Edge

Motorized Rooftop Awning Warranty Coverage

- Fabric - 5 Years
- Aluminium Construction - 2 Years
- Motor - 5 Years
- Lighting - 2 Years



Fabric

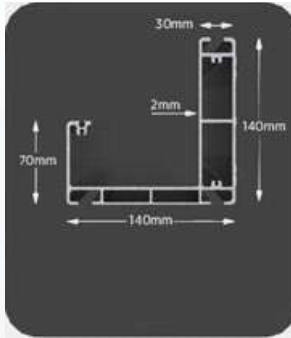
- 5-year guaranteed, block-out fabric made in USA, France or Spain.
- Block-out fabric: 3 layered sun-proof, flame-retardant.
- The characteristics of block-out fabric make it durable as it can withstand outside elements.
- Block-out fabric is PVC -based weighing 850g/m2
- Color options: white, cream and gray
- 3D pattern option available.
- Fabric temperature resistance range: -30°C/+70°C Flame retardation: M2 -NF P 92 507 2004
- UV resistant, antibacterial. Fabric temperature performance: E class
- No phthalate, which is harmful for humans, is involved.

Elatech Belt

- Steel tension corded thermoplastic polyurethane: 92° :ISO 17396
- High resistance against wear and tear
- Transmission: 30 kW max
- Temperature range for efficient function -25°C /+ 80°C
- Elasticity: Perfect
- Operation: Quiet

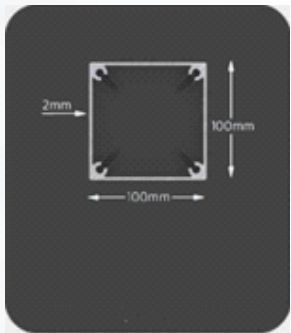
Components

- All the components and fittings are 304 stainless steel.
- Metal plates used are min 60-80 micron, polyester-based, powder coated, outdoor resistant.
- Powder coat offers a smooth surface, makes cleaning fairly easy.



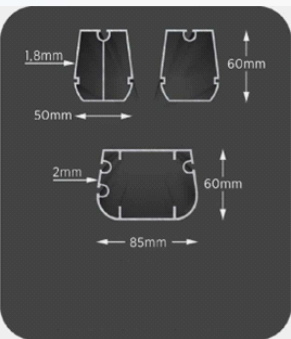
Front Girder/Gutter Profile

- Dimensions of RTS/400 segment front girder/ rain gutter profile is 740mm x 740mm, which weighs 4800g per meter.
- Raw material of high alloy, extruded profiles is TS 6063 aluminum.
- This profile collects rain water and drains it through posts and adds strength to the awning construction.
- Grooves on the profile ease the assembly/disassembly of the system.



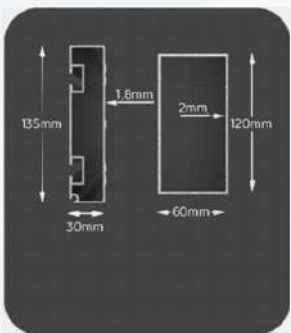
Front Post Profile

- Dimensions of front post profile on motorized rooftop is 700mm x 700mm, which weighs 3650g per meter.
- Raw material of high alloy, extruded profiles is TS 6063 aluminum.
- Mounted on to the gutter from below, it drains rain water.
- Grooves within the posts help assembly and disassembly of the system.
- Posts are designed to conceal screws.



Fabric Profiles

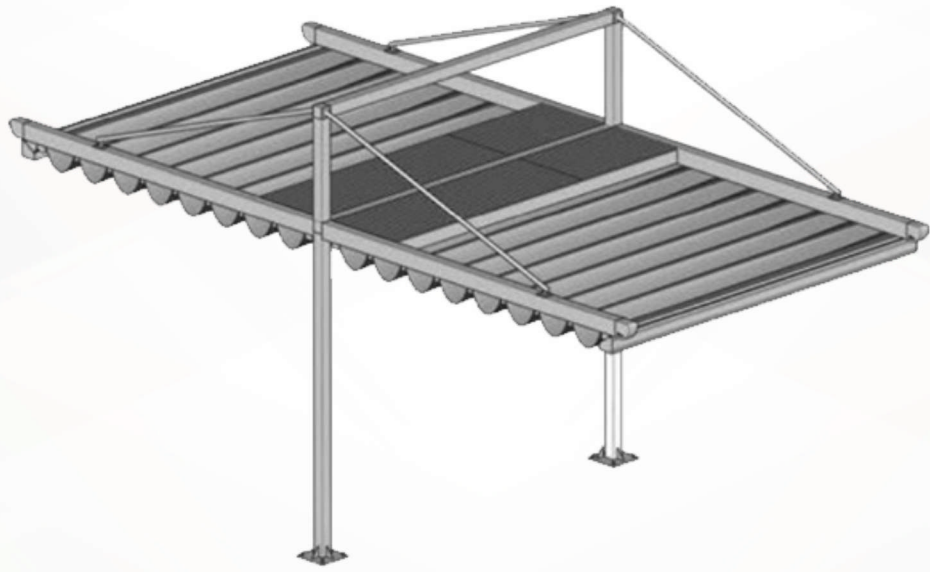
- Dimensions of fabric profile is 60mm x 50mm, which weighs 7250g per meter.
- Depending on the project, they are positioned at a certain distance to enhance resistance .
- Dimensions of fabric tensioning profile on motorized rooftop is 85mm x 60mm with, which weighs 7800g per meter.
- Positioned both at the frontmost and backmost of the fabric, this profile carries the fabric forwards and backwards, powered by the maximum tensioning force of the motor and profile's strength itself.



The Girder And Window Profiles

- The girder is 735mm x 30mm, which weighs 7745g per meter.
- The size of window reinforcement profile is 750mmx50mm, which weighs 2750g per meter.
- The other window reinforcement profile is 720mmx60mm, which weighs 7900g per meter.

Models



Flat Hinged Double Sides



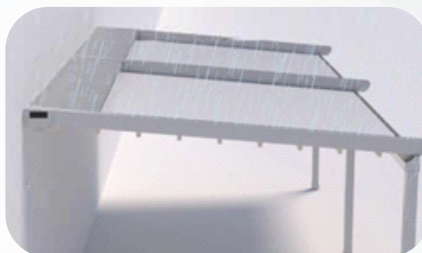
Daytime



Night

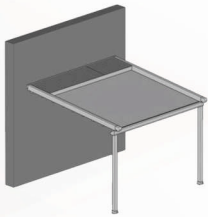


Sun



Rain

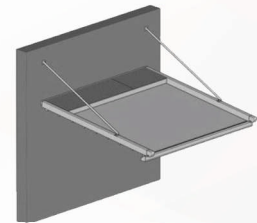
Models



Standard



Standard Double Sides



Standard Hinger



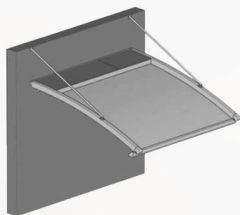
Standard Double Sides Hinger



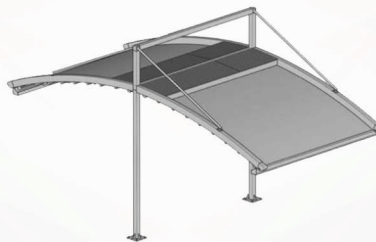
Curved



Curved Double Sides



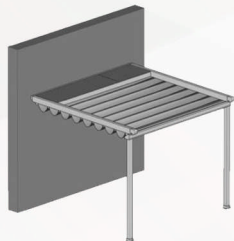
Curved Hinged



Curved Double Sides Hinged



Fully Curved



Flat



Flat Double Sides



Flat Hinged

Colors



Ral Color Chart

1000	1001	1002	1003	1004	1005	1006	1007	1011	1012	1013	1014	1015	1016	1017	1018	1019
1020	1021	1023	1024	1027	1028	1032	1033	1034	2000	2001	2002	2003	2004	2008	2009	2010
2011	2012	3000	3001	3002	3003	3004	3005	3007	3009	3011	3012	3013	3014	3015	3016	3017
3018	3020	3022	3027	3031	4001	4002	4003	4004	4005	4006	4007	4008	4009	4010	5000	5001
5002	5003	5004	5005	5007	5008	5009	5010	5011	5012	5013	5014	5015	5017	5018	5019	5020
5021	5022	5023	5024	6000	6001	6002	6003	6004	6005	6006	6007	6008	6009	6010	6011	6012
6013	6014	6015	6016	6017	6018	6019	6020	6021	6022	6024	6025	6026	6027	6028	6029	6032
6033	6034	7000	7001	7002	7003	7004	7005	7006	7008	7009	7010	7011	7012	7013	1015	7016
7021	1022	7023	7024	7026	7030	7031	7032	7033	7034	7035	7036	7037	7038	7039	7040	7042
7043	1044	1045	7046	7047	8000	8001	8002	8003	8004	8007	8008	8011	8012	8014	8015	8016
8017	8019	8022	8023	8024	8025	8028	9000	9001	9002	9003	9004	9005	9010	9016	9017	9018

Colors

Wood / Texture



9010



1013



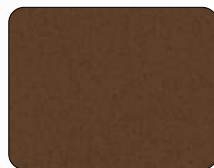
7047



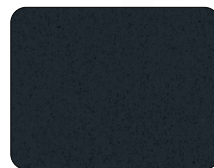
7039



8003



8028



7016



9005



A-4252-8



A-4513-8

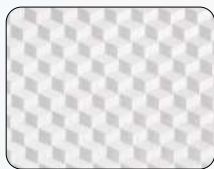


A-4513-9



A-4395-8

SIOEN Fabric Color Chart



8118/9002



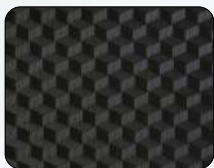
8118 /1622



8118 /7500



8118 /7024



8118/7999



8118 /6028



8118 /3017



8118 /5003



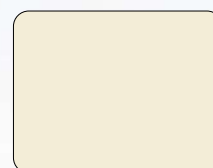
8116/9002



8116 /1622

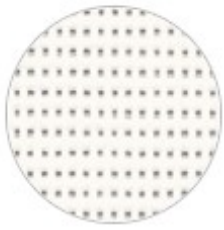


8290 /9002

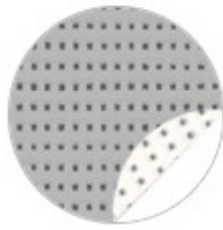


8290 /1622

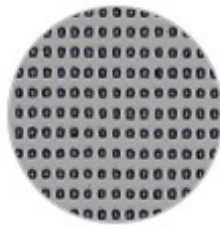
SOLTIS 86 Fabric Color Chart



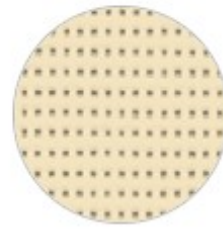
white
86-2044



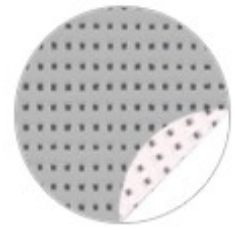
alu/white
86-2051



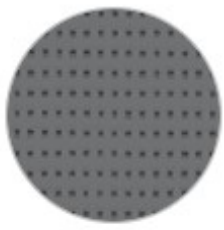
beaten metal
86-2045



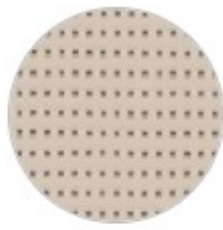
champagne
86-2175



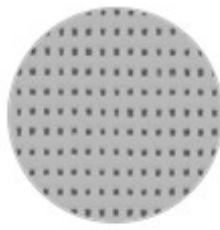
alu/oat
86-2046



concrete
86-2167



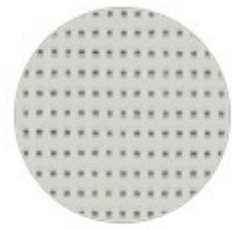
sandy beige
86-2135



alu/alu
86-2048



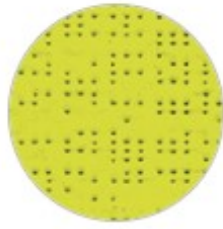
anthracite
86-2047



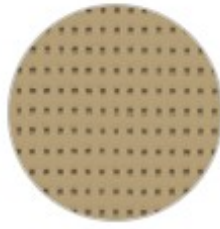
boulder
86-2171



alu/anthracite
86-2068



aniseed
92-2157



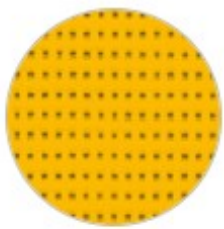
pepper
86-2012



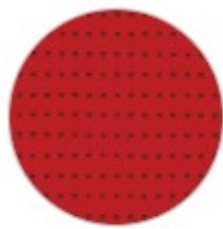
snow white
86-50690



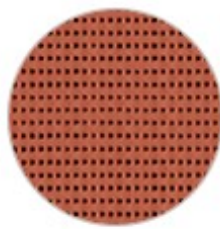
bronze
86-2043



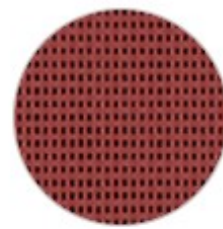
buttercup
86-2166



red
86-8255



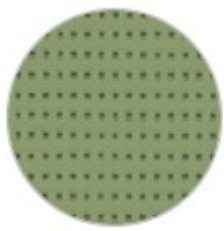
brick
86-51180



deep red
86-51181



orange
86-8204



moss green
86-2158

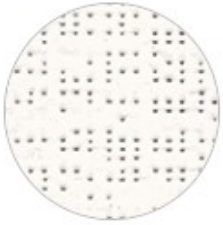


deep blue
86-51182



deep black
86-51176

SOLTIS 92 Fabric Color Chart



white
92-2044



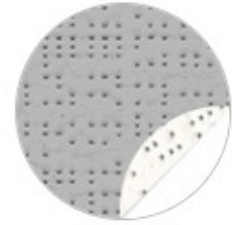
boulder
92-2171



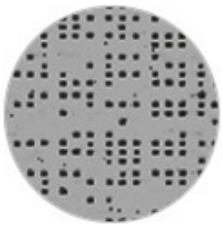
alu/anthracite
92-2068



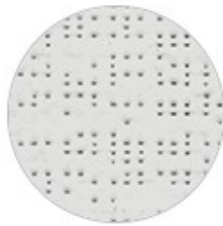
sandy beige
92-2135



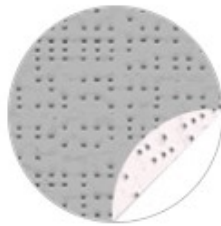
alu/white
92-2051



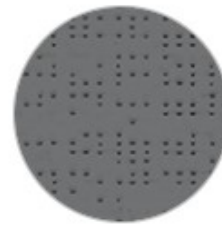
beaten metal
92-2045



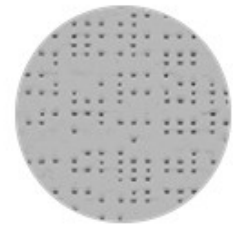
cloud
92-50272



alu/oat
92-2046



concrete
92-2167



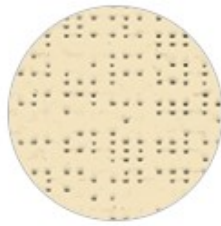
alu/alu
92-2048



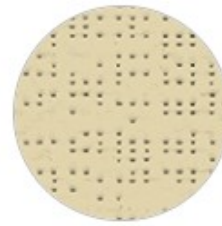
**alu/medium
grey**
92-2074



anthracite
92-2047



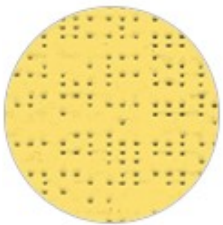
champagne
92-2175



hemp
92-50265



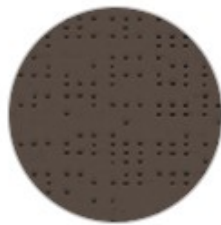
pepper
92-2012



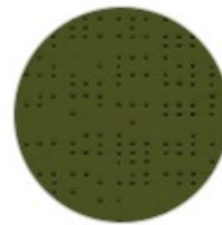
gold
92-50273



havana-brown
92-50266



bronze
92-2043

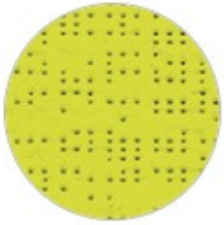


beetle
92-2149



moss green
92-2158

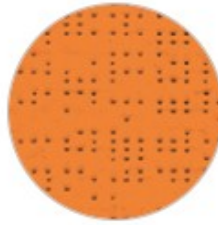
SOLTIS 92 Fabric Color Chart



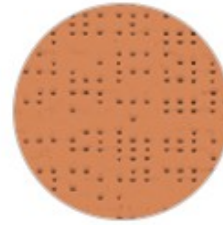
aniseed
92-2157



buttercup
92-2166



orange
92-8204



copper
92-50274



red
92-8255



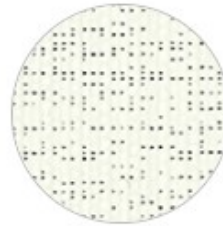
lagoon
92-2160



tennis green
92-8056



quartz
92-50303



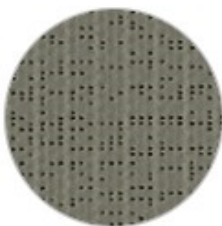
snow white
92-50690



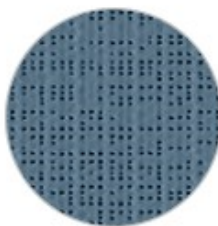
shea
92-50843



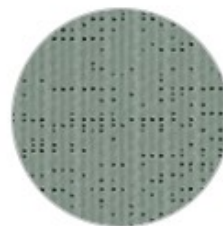
taupe
92-50850



dark grey
92-51177



celestial grey
92-51178



green-grey
92-51179



brick
92-51180



deep red
92-51181



deep blue
92-51182



deep black
92-51176