

**Hardened self-tapping flat head screw for PVC frames and connections in timber, TX**



Description

Application	Screw for installation of e.g. window and door frames
Type of installation	This screw does require prior drilling
Substrate	Concrete, masonry, timber
Material	Zinc-plated low carbon steel

Features and advantages

**200 mm**

**Screw length**

We manufacture screws up to 212 mm long.



**TX drive**

TX drive guarantees optimum torque transfer.



**Countersunk head with cutting ribs**

Countersunk head ensures flush fitting of the screw in the installed member. Self-countersinking head ensures aesthetic finish result.



**Serrated thread**

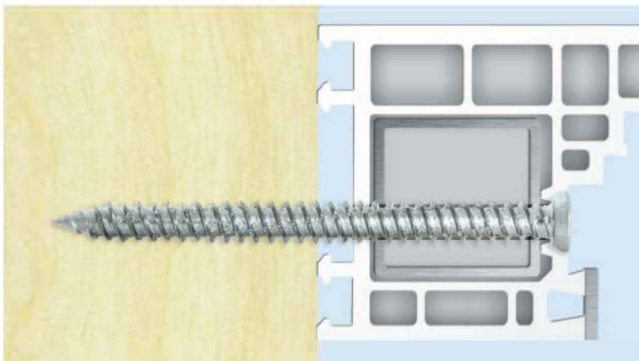
Thread design guarantees reliable and long-lasting connection – both in timber and masonry



AT-15-8977/2012



Sample application



**DESIGN RESISTANCE**

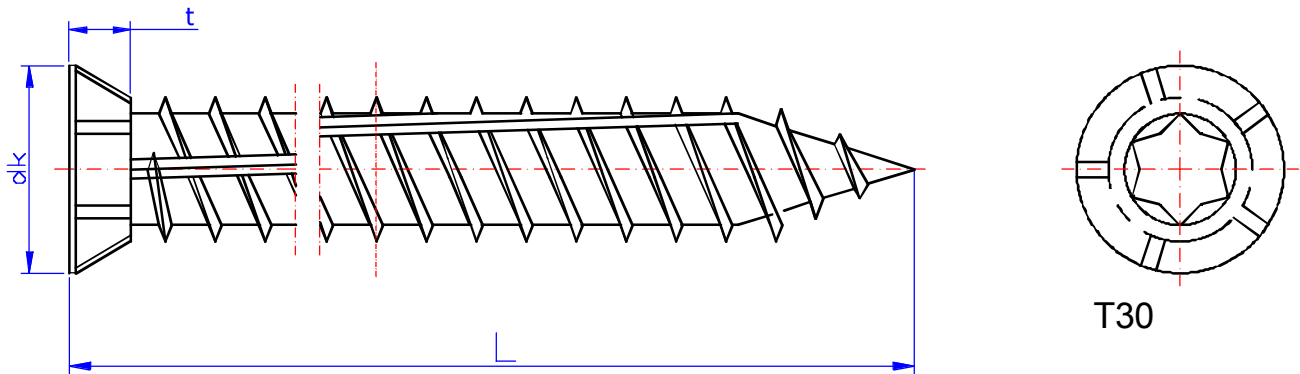
Substrate	Anchorage $h_{eff}$ [mm]	Value [kN]
Design resistance in concrete C20/25*	30	1.68
Design resistance in solid brick**	40	0.95
Design resistance in solid silica brick***	40	0.97

\*Normal weight concrete C20/25

\*\*Solid clay brick, class not lower than 10

\*\*\*Solid sand-lime brick, class not lower than 20

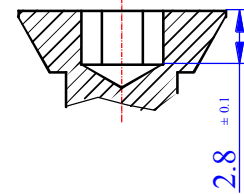
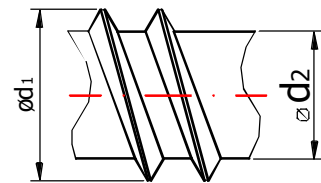
## Hardened self-tapping flat head screw for PVC frames and connections in timber, TX



T30

	60	80	100	120	150	180	200
ød1	max.	7.50	7.50	7.50	7.50	7.50	7.50
	min.	7.20	7.20	7.20	7.20	7.20	7.20
ød2	max.	5.30	5.10	5.10	5.10	5.10	5.10
	min.	5.10	4.90	4.90	4.90	4.90	4.90
dk	max.	11.00	11.00	11.00	11.00	11.00	11.00
	min.	10.60	10.60	10.60	10.60	10.60	10.60
t	max.	3.96	3.96	3.96	3.96	3.96	3.96
	min.	3.60	3.60	3.60	3.60	3.60	3.60

L	min.	max.
60	58.5	60
80	78.0	80
100	98.0	100
120	118.0	120
150	147.5	150
180	177.0	180
200	197.0	200



2.8 ± 0.1

