



www.tgpsystems.com



Glass Roof Systems

Open / Close

Movable Glass Roof



Automatic Glass Roof System is a ceiling system that closes with a remote control.

The heat-insulated size of the glasses provides shine. It gives you the chance to use the same daylight in your home from cold and heat.

You will catch the daytime sky watching the night stars transition. Indoor spaces turn into open spaces.

The winter room will destroy the warm room in cold and snowy weather, and the winter garden in dark winter weather. It also offers a visual beauty with its sliding glass balcony winter garden model.

Winter gardens expand their lives and bring the garden into the house in a way. Our winter gardens offer ideal thermal insulation and rational structures for low energy costs and high life.

With Winter Garden systems, you can make your garden both visually and modern.

You have a house with a garden and are in good working condition suitable for use or in better conditions; As Glass Balcony and Shading Systems, we offer you a wide range of model shading systems designs.

Movable Glass Roof



The Opening and Construction Features Of Automatic Movable Glass Roof;

In Systems Opening Up To 6000 Mm;

* Module Width Is Between 1500-2500 Mm.

* Intermediate Bar Profiles Are 50x150x3 Mm Steel.

* Aluminum Gutter And Feet Are Applied To The Front Facade.

* Back Steel Is 100x100x3 Mm.

* Min. Expansion Is Considered As 3000 Mm. In Systems With Expansion From 6000 Mm To 10000 Mm;

* Module Width Max. Must Be 1600 Mm.

* Intermediate Bar Profiles 100x200x3 Mm,

* Back Steel Must Be 100x100x3 Mm Steel.

* 120x120x3 Mm Steel Horizontals Are Applied To The Front And The Gutter Is Installed Outside.

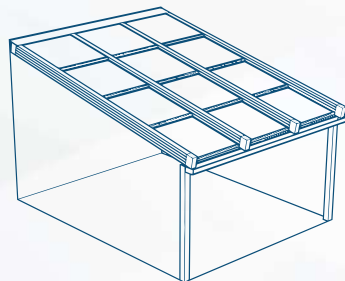
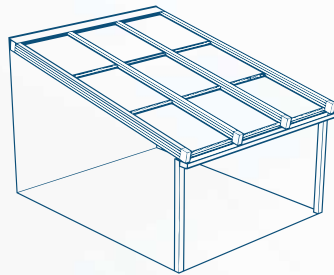
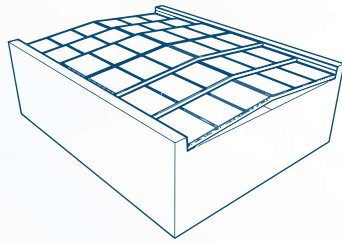
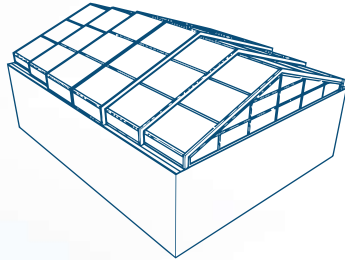
* 100x100x3 Mm Steel Is Used For The Feet.

* Water Discharges Are Provided From The Outer With Aluminum Boxes (60x60x2).

* Back Steel Must Be 100x100x3 Mm.



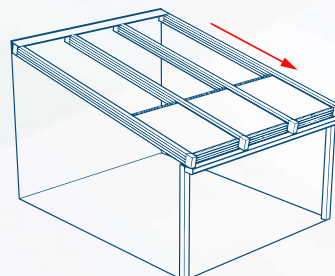
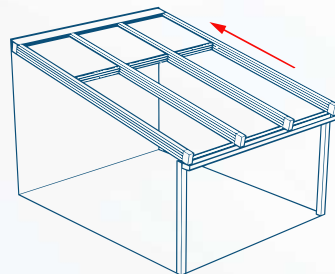
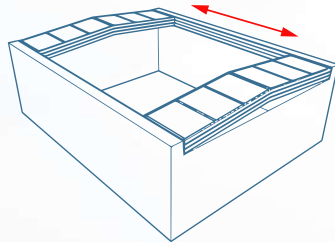
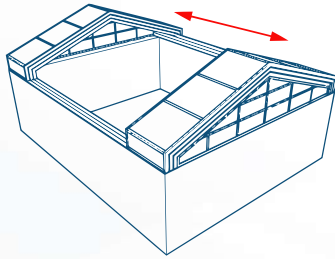
System Features



System Features For the system with the dimensions of 180cm H x 500cm L

- * Max opening is 10 mt.
- * System glass feature; It is insulating glass (6mm Cool Plus Temper + 16 mm gap + 8 mm Temper).
- * The steel dimensions used between the systems are 50X150X3mm.
- * 150X160mm aluminum special water drainage chute is applied as a water drain.
- * 120X80mm special vertical feet used as vertical carriers are also used for water discharge flow.
- * 80X80X3mm is used as back carrier steel.
- * Engine brand is MOSEL. Somfy motor is available upon request. It has a 2 year warranty.
- * Belt system is special series M8 belt.
- * Front heads are tensioned with belt adjustment, making it easier to access the system.
- * The wheels are casterite on a stainless bearing.
- * Each glass has 6 wheels.
- * Side carrier rails are the thickest series, 1 mt is 6 kg.
- * There is a special extra water trough under the rails.
- * All screw group is stainless.
- * The system is evaluated according to the project as 1 fixed 3 openings or 1 fixed 4 openings.
- * There is a 100% waterproofing guarantee.
- * Internal or external curtain systems can be applied to the system on request.
- * LED strip (in the box) or recessed lens spot lighting can be used for lighting.

System Features



System Features For the system with the dimensions of 500cm H x 1000cm L

- * Max opening is 10 mt.
- * System glass feature; It is insulating glass (6mm Cool Plus Temper + 16 mm gap + 8 mm Temper).
- * The steel dimensions used between the systems are 100X200X4mm.
- * 150X160mm aluminum special water drainage chute is applied as a water drain.
- * Water drains are provided with 60X60X2mm aluminum boxes.
- * 100X100X3mm is used as back carrier steel.
- * 120X120X3mm horizontally 120X120X3mm steel carrier is used on the front facade and 120X120X3mm vertically.
- * Engine brand is MOSEL. Somfy motor is available upon request. It has a 2 year warranty.
- * Belt system is special series M8 belt.
- * Front heads are tensioned with belt adjustment, making it easier to access the system.
- * The wheels are casterite on a stainless bearing.
- * Each glass has 6 wheels.
- * Side carrier rails are the thickest series, 1 mt is 6 kg.
- * There is a special extra water trough under the rails.
- * All screw groups are stainless.
- * The system is evaluated according to the project as 1 fixed 3 openings or 1 fixed 4 openings.
- * There is a 100% waterproofing guarantee.
- * Internal or external curtain systems can be applied to the system on request.
- * LED strip (in the box) or recessed lens spot lighting can be used for lighting.



www.tgpsystems.com



Fixed Glass Roof

Open / Close

Fixed Glass Roof



FIXED GLASS ROOF

Glass ceiling, with its specially designed aluminum profiles, has a holistic system approach.

It is an uninsulated winter garden system with an aesthetic appearance that can be applied between 2°-22° inclination.

Application of different geometric forms enables designs that meet and exceed your needs. Its specially designed steel support profile enables the user to carry out desired carrier reinforcements without disturbing the visual appearance.

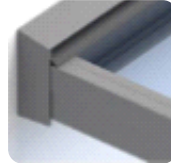
Despite the thin appearance, its thick internal structure allows a durable and long lasting winter garden. Insulation wicks used in the winter garden system are produced according to EPDM standards.

Fixed Glass Roof



Lightening

Optionally, SPOT LED or SOFT LED lighting options integrated into glass carrier profiles can also be applied



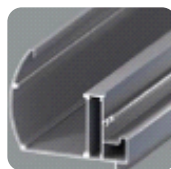
Articular Structure

Joint structure of the front carrier and wall profile in the winter garden system and According to its silicone-free glazing capability, it allows easy and fast installation.



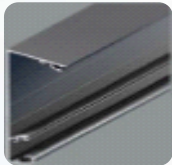
Glass combinations

Optionaly, it offers reflective, smoked and different glass color options. Safe glass: Combinations such as "10mm Tempered" or "10mm Tempered+Airspace 5+5" laminated it is manufactured from suitable double glazing profiles.



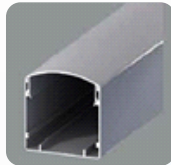
Rain Gutter

Our Rain Gutter profile is 152mm x 127mm in size and 4.600 gr per meter. weighs. it collects rain water over the system and transmits it to the pillars at the bottom and discharges the water. in addition, as a front beam. it is an element that gives strength to the Fixed Glass Roof System.



Wall Profile

Our Wall Profile is 70mmx170mm in size and 2000gr perm eter weighs. It ensures that the system can be completely attached to the Wall or surface to be mounted and that all carrier profiles are combined with angle profiles.



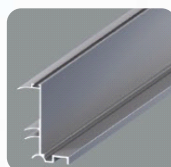
Strut Profile (Column)

Our Strut Profile is 120mmx 110mm In size and is 3700gr per meter weighs. It completes the evacuation of rain water coming from the stream profile Consisting of two parts, this profile is mounted on the ground with a concealed flange. Thus, it offers a clean and aesthetic appearance.



Carrier Profile

Our carrier glass profile is 55mm x 116mm in size and 1610gr per meter. weighs. This profile carries the Glass Roof System by being placed between and between each glass edge from the wall to the stream. It is used for 2 purposes, with an outer cover for those used on the edges and a middle cover for those used between glass



Angle Profile

Angle profile is 28mm x 90mm in size and 1100 gr per meter weighs. This profile allows the Glass Roof, which extends from the Wall Profile at the back to the Stream Profile at the front, to be adjusted according to the desired slope. According to its articulated structure, it provides maximum integration in every slope determined between 2 and 22 degrees

Glass Options

Single Glass: 10mm(5 + 0,76 + 5) Tempered and laminated transperent glass
Double Glazing: 24mm (4 + 16 + 4) Low-e Tempered and laminated transperent glass
The Glass thickness can be min. 8 mm and max. 30 mm

Glass color options: Natural Transparent, Smoked, Smoked Reflected

References



More efficient
use of space
and a pleasant
outdoors.



Interconnectable
modules and wide
color combinations







www.tgpsystems.com