



[www.tgpsystems.com](http://www.tgpsystems.com)



## Pergola & Motorized Rooftop Awning

Open / Close



# Pergola & Motorized Rooftop Awning



Motorized rooftop awning is a sturdy, long-life all weather outdoor system that functions with a reliable tensioning mechanism. It is an ideal solution for cafes, restaurants as well as gardens, terraces and commercial or private patios.

The system protects users from UV exposure and harsh elements thanks to its 3-layer fabric system.

Rails and moving parts are silent functioning and low maintenance. Remote controlled, it is very practical as the rooftop of the same area can be used wide open or fully closed.

Various enclosure options can be applied below the system around the facility, thus ensuring a fully isolated space for all season outdoor comfort.









# References



**High Quality Profiles  
Somfy and Becker Motors**



**High Quality Serge Ferrari, Sioen Fabric**



# References



**5 year Fabric Guarantee**  
**5 year Motor Guarantee**



**2 year Alu. Construction Guarantee**  
**2 Year Lighting Guarantee**



# Technical Details of Pergola and Motorized Rooftop Awnings



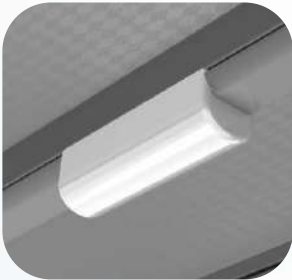
## 5 Year Warranty

Fabric used on motorized rooftop awnings is a 5- year-guaranteed, block-out fabric. Our preference on fabric is SERGE FERRARI and SIOEN that are 3- layered, flame retardant and sunproof. Its PVC-based flexy characteristics make it the most suitable material against outdoor weather conditions. Functionality and operability of our awnings have a 5-year mechanical warranty.



## Motor

The motor powering our awning system is covered under a 5-year warranty by the motor manufacturer.



### **Lighting**

24 Volt, Samsung A+ daytime LED lighting is installed on motorized rooftop awnings. IP65 led lighting runs on 0.150 mA.

One 3w led per sqm.

Leds are specially designed in tine with interiors of fabric profiles.

Mounted on fabric profiles, leds are integrated with the overall system to last long and look stylish

Custom-manufactured polycarbonate led socket; 700 lumen-3000 kelvin

User-friendly, easy-to-replace led design



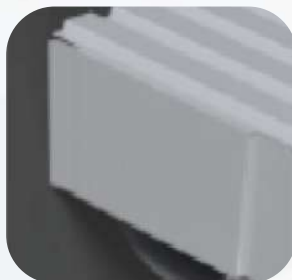
### **Protective Sheet**

Made of powder-coated galvanized sheet, the protective sheet, mounted on top of the railed rooftop awning prevents the motor, joint pins and connector and rolled- back fabric from weather elements and external factors.



### **Rain Gutter Side Cap**

Used on the side facing gutter parts, the cap achieves a sleek look and prevents water spray. Mounted on the gutter with screwless connecting pins, the cap helps complete a solid look.



### **Motor Cap**

Applied as the motor cap and on the parts of the motor tube facing sideways, it nicely blocks the sight of metal components and completes the aesthetic look of the entire system.



### **Rail Front Cap**

This part, made up of powder-coated aluminum, the same color as guides and posts, is used to cover the front end of the guides through which carriers move.





### **Water Discharge**

The pooling water on the fabric is directed towards the gutter and with the help of the tilting position of the roof drained through posts whose bottom parts are connected to the floor with stylish looking aluminum cast material that provides both a sturdy floor grip and water drainage.



### **Rain Gutter Connection Apparatus**

Two gutters are attached to each other with an injection molded, high alloy, specially designed apparatus. Remarkable advantages of the apparatus is prevention of isolation flaws at connecting ends and ensuring an aesthetic finish. It also helps the overall system to look solid.

### **Carrier Car**

**Carriers are the components that provide mobility of the fabric through railed guides.**

-They are made of polyamide, a durable, longer lasting material more resistant to weather elements.

-Connectors and fixtures on the carrier is 304 stainless steel.

-Carriers maintain mobility within the guide profiles smoothly and quietly even when there's pressure due to heavy fabric or curved shape of profiles.

-Carriers have four wheels, preventing obstruction of mobility.







### Insulation Seals

Insulation seals provide insulation between the moving parts of the awning and the construction. They prevent water seepage indoors, providing outstanding insulation by directing the water to the gutter.



### Gutter



### Rail Edge

## Motorized Rooftop Awning Warranty Coverage

- Fabric - 5 Years
- Aluminium Construction - 2 Years
- Motor - 5 Years
- Lighting - 2 Years



### Fabric

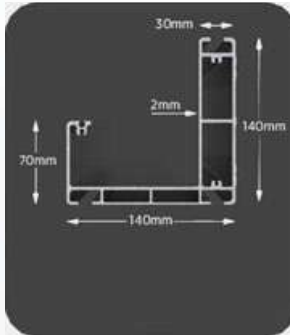
- 5-year guaranteed, block-out fabric made in USA, France or Spain.
- Block-out fabric: 3 layered sun-proof, flame-retardant.
- The characteristics of block-out fabric make it durable as it can withstand outside elements.
- Block-out fabric is PVC -based weighing 850g/m<sup>2</sup>
- Color options: white, cream and gray
- 3D pattern option available.
- Fabric temperature resistance range: -30°C/+70°C Flame retardation: M2 -NF P 92 507 2004
- UV resistant, antibacterial. Fabric temperature performance: E class
- No phthalate, which is harmful for humans, is involved.

### Elatech Belt

- Steel tension corded thermoplastic polyurethane: 92° :ISO 17396
- High resistance against wear and tear
- Transmission: 30 kW max
- Temperature range for efficient function -25°C /+ 80°C
- Elasticity: Perfect
- Operation: Quiet

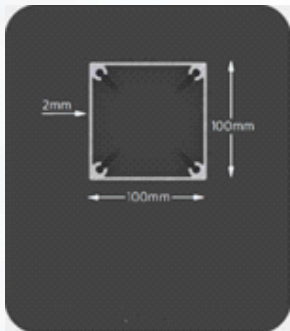
### Components

- All the components and fittings are 304 stainless steel.
- Metal plates used are min 60-80 micron, polyester-based, powder coated, outdoor resistant.
- Powder coat offers a smooth surface, makes cleaning fairly easy.



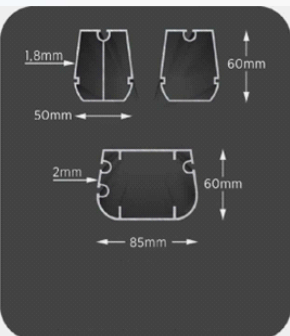
#### Front Girder/Gutter Profile

- Dimensions of RTS/400 segment front girder/ rain gutter profile is 740mm x 740mm, which weighs 4800g per meter.
- Raw material of high alloy, extruded profiles is TS 6063 aluminum.
- This profile collects rain water and drains it through posts and adds strength to the awning construction.
- Grooves on the profile ease the assembly/disassembly of the system.



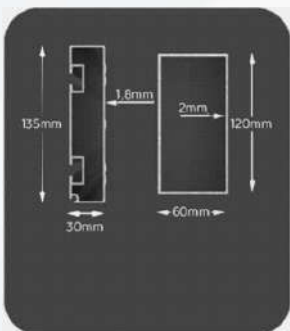
#### Front Post Profile

- Dimensions of front post profile on motorized rooftop is 700mm x 700mm, which weighs 3650g per meter.
- Raw material of high alloy, extruded profiles is TS 6063 aluminum.
- Mounted on to the gutter from below, it drains rain water.
- Grooves within the posts help assembly and disassembly of the system.
- Posts are designed to conceal screws.



#### Fabric Profiles

- Dimensions of fabric profile is 60mm x 50mm, which weighs 7250g per meter.
- Depending on the project, they are positioned at a certain distance to enhance resistance .
- Dimensions of fabric tensioning profile on motorized rooftop is 85mm x 60mm with, which weighs 7800g per meter.
- Positioned both at the frontmost and backmost of the fabric, this profile carries the fabric forwards and backwards, powered by the maximum tensioning force of the motor and profile's strength itself.

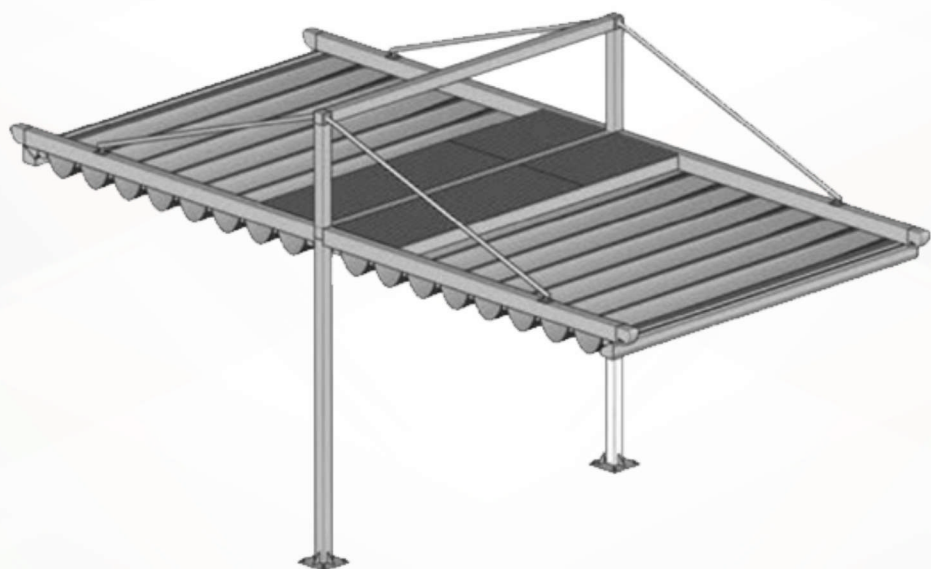


#### The Girder And Window Profiles

- The girder is 735mm x 30mm, which weighs 7745g per meter.
- The size of window reinforcement profile is 750mmx50mm, which weighs 2750g per meter.
- The other window reinforcement profile is 720mmx60mm, which weighs 7900g per meter.



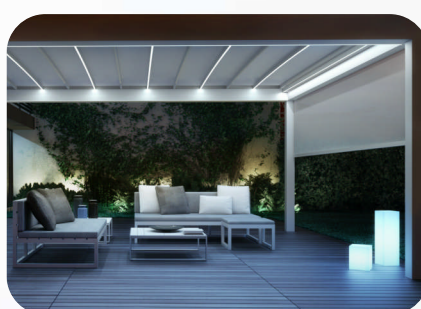
# Models



Flat Hinged Double Sides



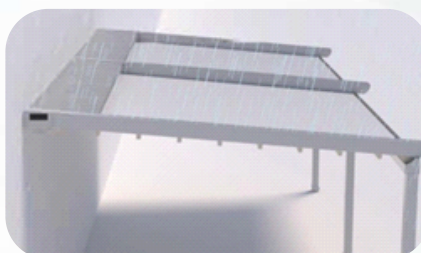
Daytime



Night



Sun



Rain

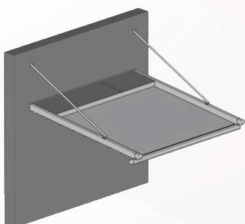
# Models



Standard



Standard Double Sides



Standard Hinger



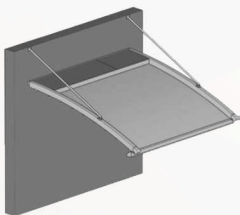
Standard Double Sides Hinger



Curved



Curved Double Sides



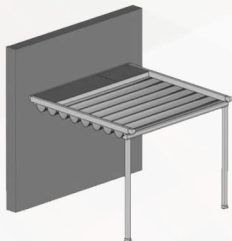
Curved Hinged



Curved Double Sides Hinged



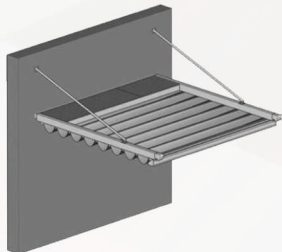
Fully Curved



Flat



Flat Double Sides



Flat Hinged



# Colors

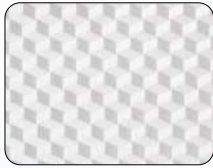


## Ral Color Chart

1000	1001	1002	1003	1004	1005	1006	1007	1011	1012	1013	1014	1015	1016	1017	1018	1019
1020	1021	1023	1024	1027	1028	1032	1033	1034	2000	2001	2002	2003	2004	2008	2009	2010
2011	2012	3000	3001	3002	3003	3004	3005	3007	3009	3011	3012	3013	3014	3015	3016	3017
3018	3020	3022	3027	3031	4001	4002	4003	4004	4005	4006	4007	4008	4009	4010	5000	5001
5002	5003	5004	5005	5007	5008	5009	5010	5011	5012	5013	5014	5015	5017	5018	5019	5020
5021	5022	5023	5024	6000	6001	6002	6003	6004	6005	6006	6007	6008	6009	6010	6011	6012
6013	6014	6015	6016	6017	6018	6019	6020	6021	6022	6024	6025	6026	6027	6028	6029	6032
6033	6034	7000	7001	7002	7003	7004	7005	7006	7008	7009	7010	7011	7012	7013	1015	7016
7021	1022	7023	7024	7026	7030	7031	7032	7033	7034	7035	7036	7037	7038	7039	7040	7042
7043	1044	1045	7046	7047	8000	8001	8002	8003	8004	8007	8008	8011	8012	8014	8015	8016
8017	8019	8022	8023	8024	8025	8028	9000	9001	9002	9003	9004	9005	9010	9016	9017	9018

# Colors

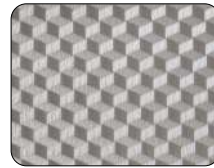
## Fabric Color Chart



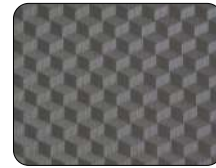
8118/9002



8118/1622



8118/7500



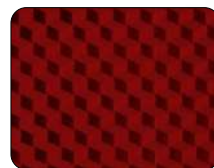
8118/7024



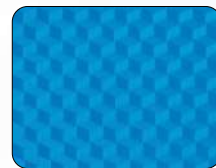
8118/7999



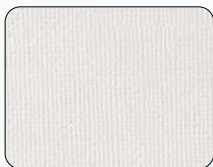
8118/6028



8118/3017



8118/5003



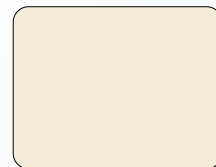
8116/9002



8116/1622



8290/9002

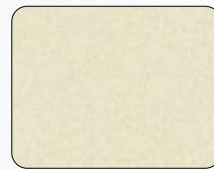


8290/1622

## Wood / Texture



9010



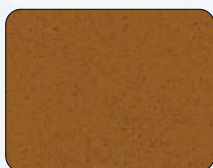
1013



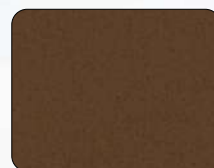
7047



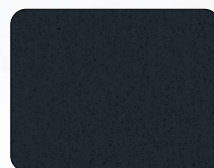
7039



8003



8028



7016



9005



A-4252-8



A-4513-8



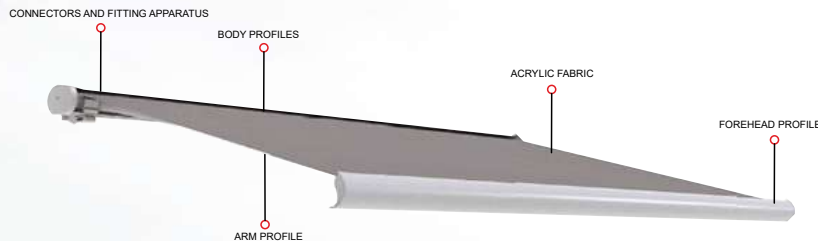
A-4513-9



A-4395-8



# Cassette Awning

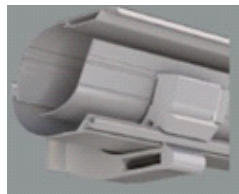


It's a system that protects the fabric against sun's negative impact, in particular, and any other adverse weather conditions. It's automatic and also economically reasonable since it decreases maintenance costs.



## Connectors:

Aluminum connectors and fittings are used in the installation of cassette awning. Ceiling or wall mounting options are available.



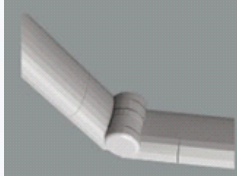
## Body profiles

Body Profiles are manufactured out of T5 6063 aluminum extrusion profile. It's composed of cover profile and fabric holder profile, average weight of which is 6100g per meter.



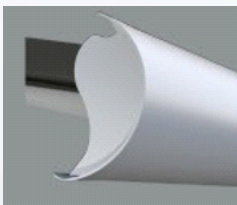
## Motor

The motor used with cassette awning Systems is Somfy. The reason for Somfy to be chosen is its reliable tensioning function which automatically stops when the fabric is fully rolled back. When in extension, the awning can be stopped at any point desired with a switch.



## Arm Profile

The joint arms of cassette awning are manufactured out of strengthened T5 6063 aluminum extrusion profiles. The size is 75mm x 37mm with 3mm thickness. Within the system are strong springs that allow the tensioning that is attached to a steel wire, forming the overall joint arm structure. Standard arm system, called 'platinum segment' is used.



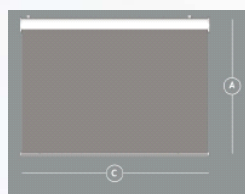
## Forehead profile

Forehead profile of cassette awning is T5 6063 resilient aluminum extrusion profile, whose size is 145mm x 73mm, which weighs 2025g per meter. Compared to rivals in the market, it's quite robust and main reason of this material being used is its easy operability and adaptability of both arms and fabric. Additionally, forehead profile is designed in such a way that it functions like a gutter to drain rain water through its grooves.



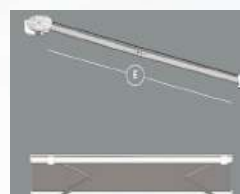
## Acrylic fabric

The acrylic fabric of cassette awning comes in more than 100 color and patterns that are pleasing to eye. The fabric is under 5-year guarantee against solar discoloration.



## Width and Expansion

(C) 200cm to 700cm  
(A) 150cm to 350cm



## Slope

(E) 0° to 45°